



DISNEY HEADQUARTERS
Hammersmith - London
AHU / Ventilation Validation & Surveying



Building Ventilation Solutions

PROJECT OVERVIEW



COMPREHENSIVE ASSESSMENT

The survey encompassed a thorough examination of various components



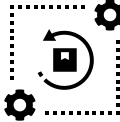
TROUBLESHOOTING & REPAIRS

Conducting research to identify any underlying problems or malfunctions in the AHUs.



PERFORMANCE OPTIMISATION

Ensure everything is running efficiently & contributing to optimal overall performance.



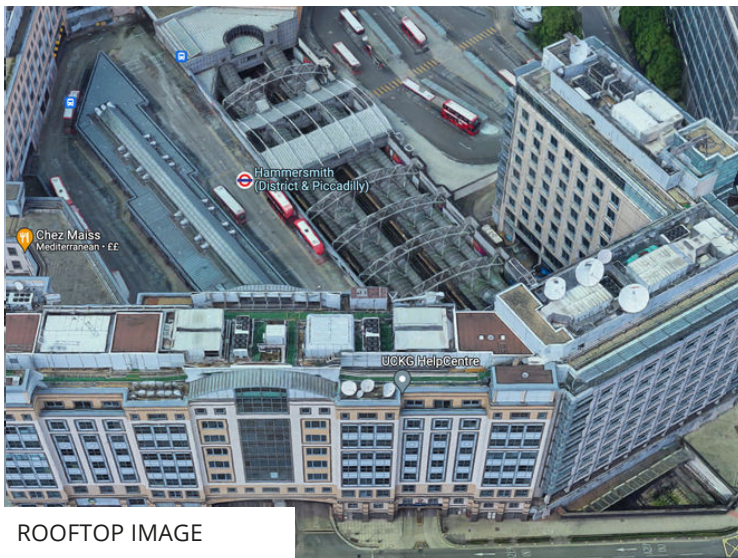
EQUIPMENT REBURFISHMENT

AHUs were found to be in reasonable condition and deemed suitable for refurbishment

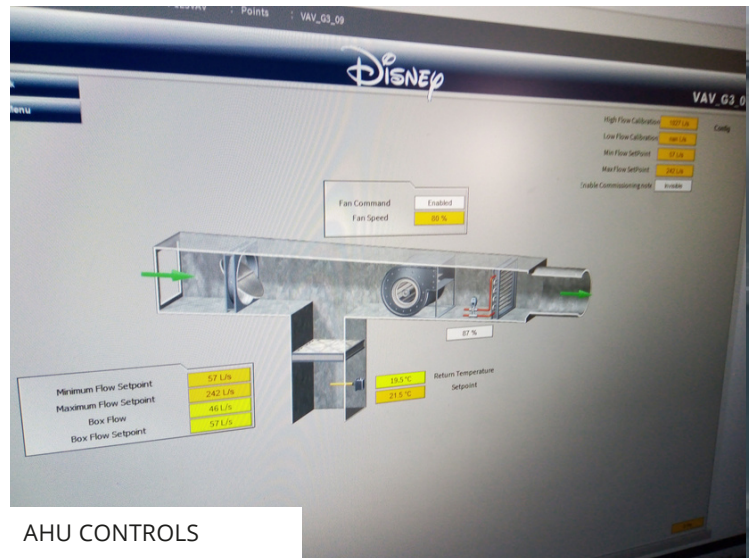


The project involved conducting a comprehensive survey and validation of the air-handling equipment (AHU) at Disney HQ in Hammersmith. The building housed multiple rooms that required proper ventilation, and the survey focused on assessing the condition and performance of the nine different AHUs, which varied in age from approximately 20 to over 30 years old. These AHUs were located throughout the building, including on the rooftop and in various plant rooms.

During the survey, the following aspects were evaluated for each AHU: unit type, required actions such as refurbishment, general condition, and recommended actions based on the findings. The objective was to provide a detailed assessment of each AHU's status and identify necessary steps to optimise their performance.



ROOFTOP IMAGE



AHU CONTROLS

PROJECT HIGHLIGHTS



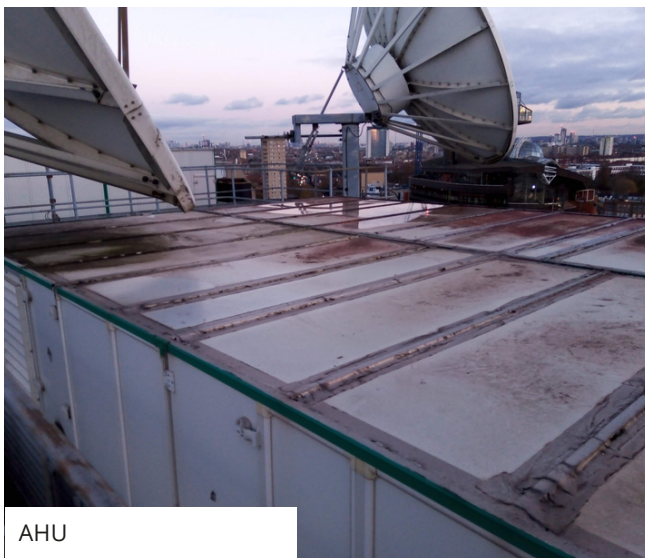
AHU



AHU



AHU



AHU

1. **Equipment Condition and Refurbishment:** The majority of the surveyed AHUs were found to be in reasonable condition and deemed suitable for refurbishment. However, upon closer inspection, certain units were identified as more suitable for replacement, and these recommendations were included in the final report.

2. **Weatherproofing Issues:** A significant problem discovered during the survey was the roof-related issues with the Weatherproof AHUs. Water leakage was observed, leading to potential damage and performance issues. Detailed recommendations were provided to address these issues and improve the weatherproofing measures for better AHU functionality.

3. **Comprehensive Assessment:** The survey encompassed a thorough examination of various components, including supplies, dampers, filters, louvres, ductworks, motors, fans, heating coils, and other relevant aspects. Each component was inspected to ensure proper functioning, and any anomalies or deficiencies were documented. For instance, observations such as "Only one supply fan is running" and "Extract fans incorrectly labelled, do not correspond with isolators" were made to highlight specific issues.

4. **Troubleshooting and Repairs:** The survey also involved conducting research to identify any underlying problems or malfunctions in the AHUs. Various issues were discovered across the surveyed AHUs, such as a single supply fan running on the North West Extract, incorrectly labelled extract fans, and bearings requiring repair. By identifying these issues, appropriate steps for rectification and maintenance were recommended.

5. **Overall Performance Optimization:** The survey extended beyond individual AHUs to encompass the entire building's ventilation system. Through meticulous examination and calculations, the project team ensured that all components and systems were running efficiently, contributing to optimal overall performance and functionality.



AHU Validation & Surveying
AIR-HANDLING UNIT SERVICES

www.bvs-ltd.co.uk
info@bvs-ltd.co.uk

BUILDING VENTILATION SOLUTIONS
AIR MANAGEMENT EXPERTS