



Movement by Perfection



The Royal League in ventilation, control and drive technology



[Product documentation](#)

Type  
GR35I-ZID.DC.CR

Article number  
116892/A01

Article number  
116892/A01

# The Royal League

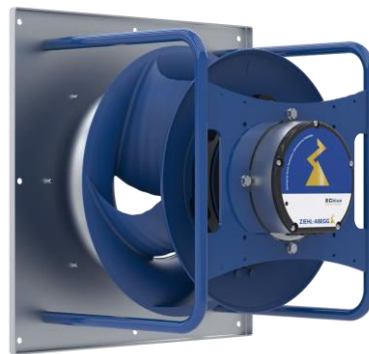
## Die Königsklasse

## Product documentation

ZIEHL-ABEGG Subsidiary  
Headquarters ZIEHL-ABEGG SE  
Heinz-Ziehl-Straße  
74653 Künzelsau  
Tel. +49 7940 16-0  
Fax +49 7940 16-300  
info@ziehl-abegg.de  
www.ziehl-abegg.de

Type  
GR35I-ZID.DC.CR

Article number  
116892/A01



### Table of Contents

1.	Product Specification - Technical Data	4
2.	Duty Point Data	5
3.	Characteristic Curve	6
4.	Drawing	7
5.	Connection Diagram	8
6.	Deviation List	9

### 1. Product Specification - Technical Data

<b>Article number</b>	116892/A01
<b>Type</b>	GR35I-ZID.DC.CR
<b>Rated values</b>	3~380-480V 50/60Hz P(ed) 2.50kW 4.00-3.20A 3100min <sup>-1</sup> 50°C
<b>Electrical connection</b>	Integrated controller
<b>ErP Data</b>	Measurement category ErP: A Air flow q(v) on Eta opt: 5228 m <sup>3</sup> /h Pressure increase p(fs) on Eta opt: 1125 Pa Input power P(1) on Eta opt: 2508 W Efficiency H(statA): 74.1 % Efficiency grade: N(actual) = 80.4 / N(target) = 62* *ErP 2015
<b>Heat Class</b>	Thermal class 155
<b>Efficiency Class</b>	IE5
<b>Io-Function</b>	BASIC-MODBUS
<b>Power Factor Controller</b>	no PFC
<b>Wireless Bluetooth</b>	
<b>Painting Stator</b>	Stator unpainted
<b>Coating Rotor</b>	Rotor 1 coatpaint resistance class 1 (L-TI-0596)
<b>Colour Sheet Rotor</b>	RAL 5002 (ultramarine blue)
<b>Material Impeller</b>	Impeller made of ZAMid
<b>Painting Impeller</b>	unpainted
<b>Colour Impeller</b>	like RAL 5002 (ultramarine blue)
<b>Connection Diagram</b>	AP00001C
<b>Installation Position</b>	Fitting position H/Vu/Vo
<b>Fitting Position Mot</b>	Mounting position H/Vu/Vo
<b>Motor Protection</b>	integrated active temperature management
<b>Type Of Protection</b>	IP55
<b>Impregnation</b>	Moisture and hot climate protection
<b>Inlet Nozzle</b>	Inlet nozzle with measuring device for volume flow
<b>Paint Nozzle</b>	unpainted
<b>Bearing Quality</b>	ball bearing with long-time lubrication
<b>Labelling UI/Csa</b>	E213826 ZC-155, MK116-0009
<b>Painting Motor</b>	Stator/rotor separately
<b>Colour Motor</b>	Stator/rotor separately
<b>Min. Operating Temperature °C</b>	-20°C
<b>Disclaimer Ct20/Doe</b>	This product complies with the U.S. DOE fan and blower regulation. Due to CT20 regulations for industrial fans and blowers in California, please verify local compliance with your regional representative.
<b>Operating Manual</b>	L-BAL-F078
<b>Weight</b>	21.00 kg

## 2. Duty Point Data

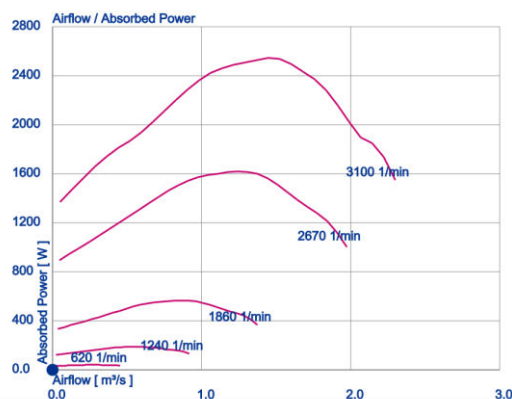
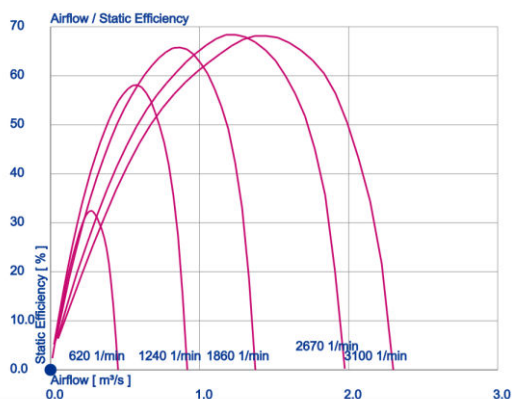
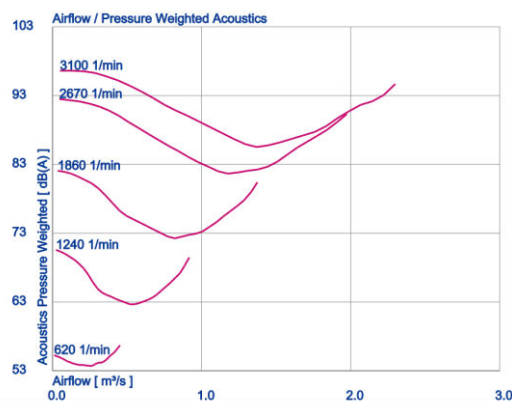
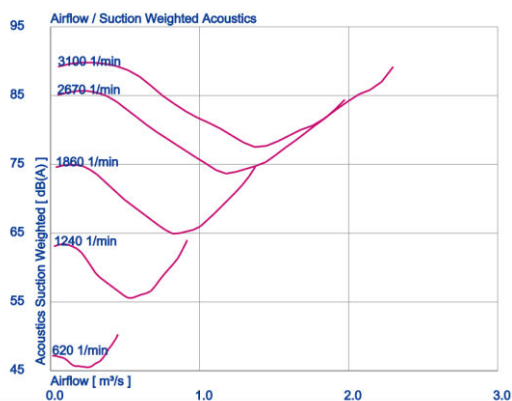
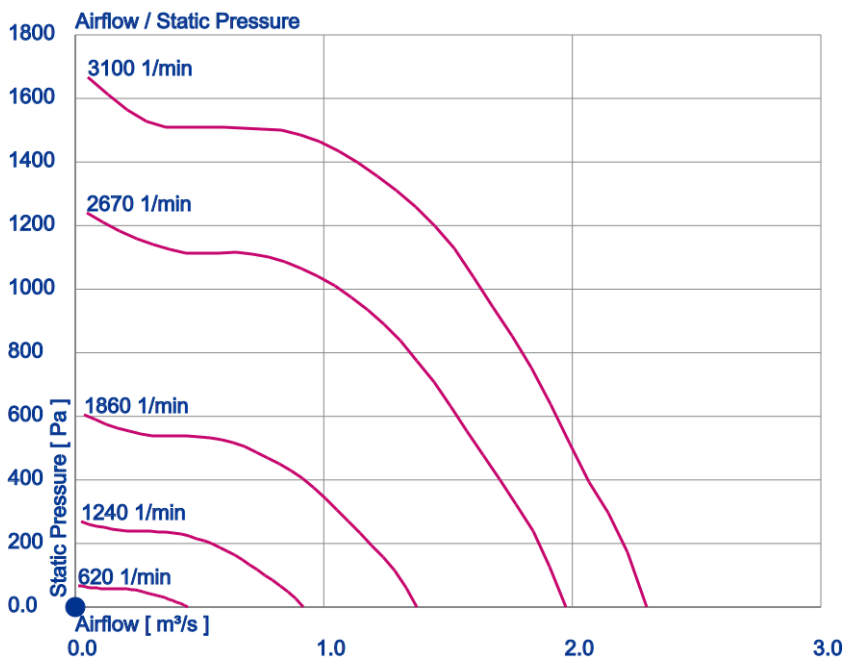
### GR35I-ZID.DC.CR (116892/A01)

Design   Fan Size   Motor Brand		GR-E/D   355   ECblue
SFP Class   SFP Value (Pspf)	-   wspm3	0,0
FEI   FEG		0,0   85
Actual FEP   Reference FEP		
Airflow (qV)   Airflow Mains	m <sup>3</sup> /s	0,0   0,0
Pressure, stat. (psF)   Static Pressure Mains	Pa	0,0   0,0
Dynamic Pressure	Pa	0,0
Total Pressure (pF)	Pa	0,0
Air Velocity	m/s	0,0
Density	kg/m <sup>3</sup>	1,16
Altitude		
Temperature	celsius	20
RPM (n)   RPM Percentage   max.(nmax)	1/min	<b>0,0 @ %   3100</b>
Absorbed Power (Psys)	W	0,0
Elec. Power	W	0,0
Shaft Power	W	0,0
System Efficiency, stat. (η <sub>SF,sys</sub> )   tot. (η <sub>F,sys</sub> )	%	<b>0,0   0,0</b>
Eta ERP   ERP Year		80,4   2026
Frequency	Hz	50
Voltage	V	
Current	A	0,0
Suction Acoustics (L <sub>w(A),5</sub> )   (L <sub>w,5</sub> )	dB(A)	<b>0   0</b>
Pressure Acoustics (L <sub>w(A),6</sub> )   (L <sub>w,6</sub> )	dB(A)	<b>0   0</b>
Enclosure / Impeller		
Dimensions (Width x Height x Depth)	mm	500 x 500 x 384
Installation (Width x Height x Depth)	mm	x x
Mass	kg	21,0
Kfactor   Kfactor Grille		140   130
Nozzle Pressure (psF Düse)	Pa	0,0
Guard Grille	no	

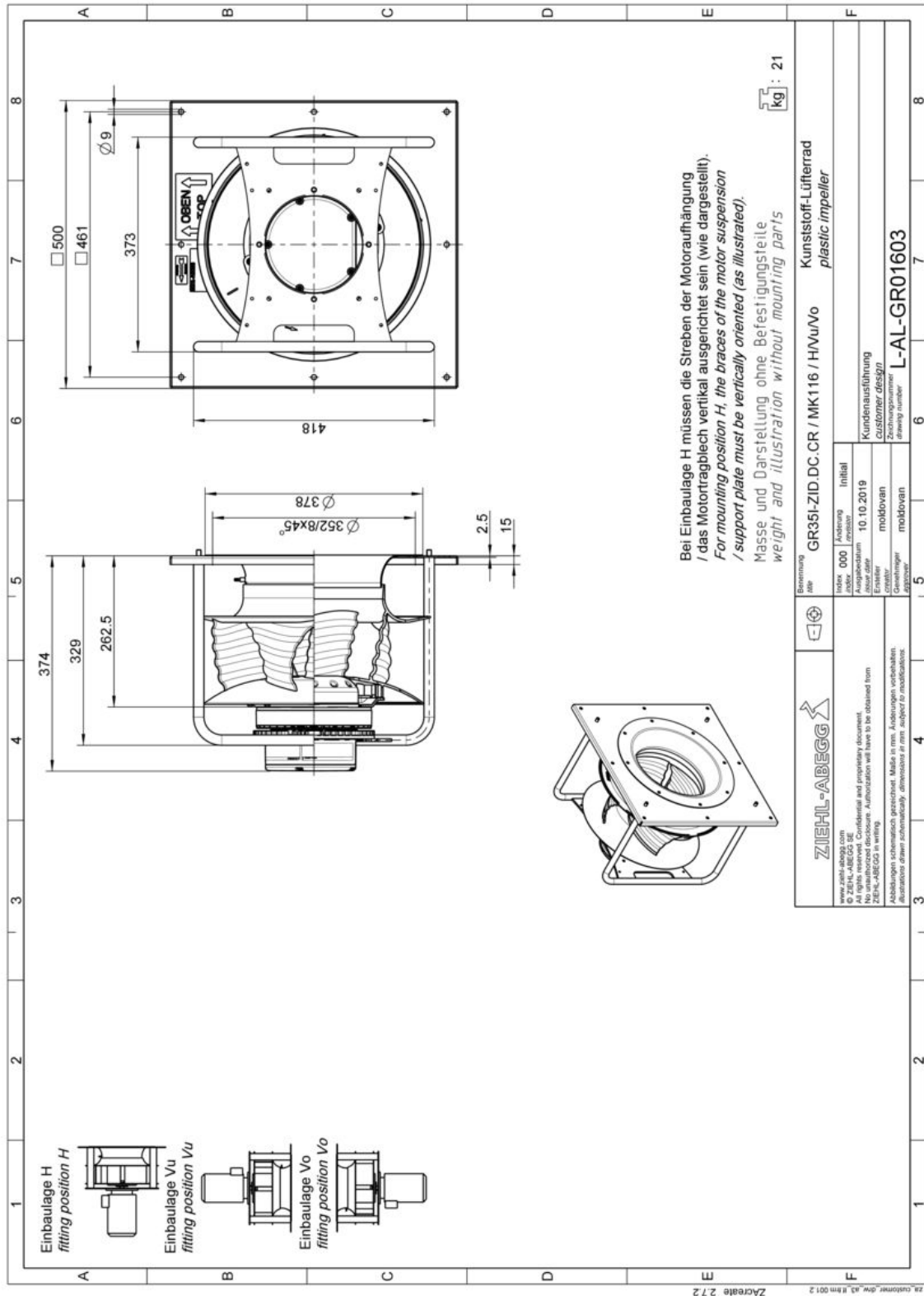
### Full Octave band

f [Hz]	sum	63	125	250	500	1000	2000	4000	8000	f [Hz]	sum	63	125	250	500	1000	2000	4000	8000
L <sub>w,5</sub>	0	0								L <sub>w,6</sub>	0	0							
L <sub>w(A),5</sub>	0	0								L <sub>w(A),6</sub>	0	0							

### 3. Characteristic Curve



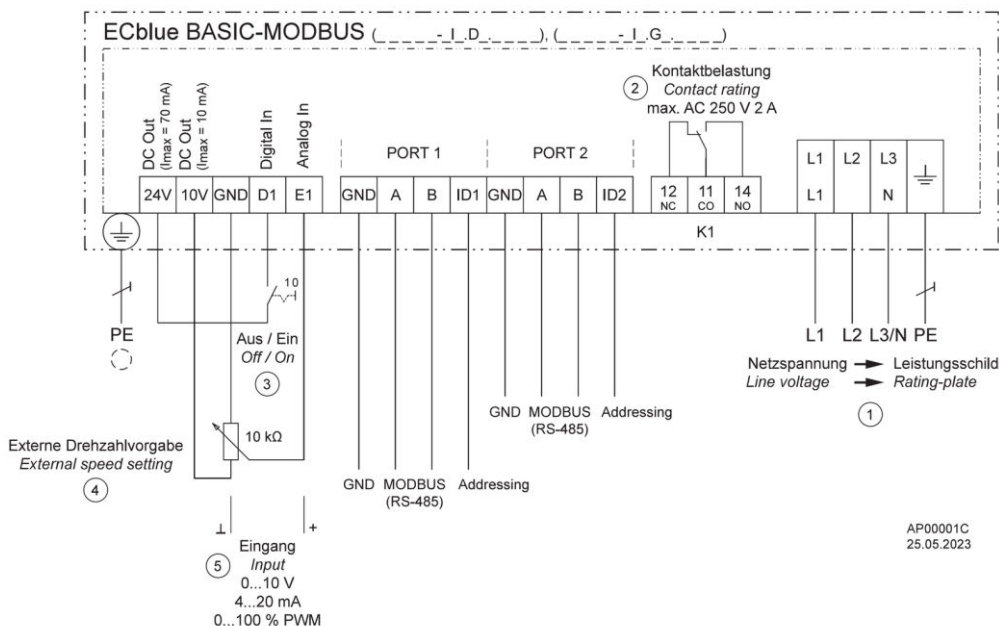
### 4. Drawing



Dimensions in mm

The illustrations shown make no claim to completeness and are for orientation purposes only.

### 5. Connection Diagram



www.ziehl-abegg.com ©ZIEHL-ABEGG SE All rights reserved. Confidential and proprietary document. No unauthorized disclosure. Authorization will have to be obtained from ZIEHL-ABEGG SE in writing.	Index index	Änderung revision	Änderung	Benennung / title
	Ausgabedatum issue date	25.05.2023		
	Ersteller creator	langm		
ZIEHL-ABEGG				Zeichnungsnummer / drawing number <b>AP00001C</b>

## 6. Deviation List

No customer specification was available. Please note that ZIEHL-ABEGG does not confirm technical requirements beyond this specification if they are not listed in a list of deviations. ZIEHL-ABEGG can therefore neither guarantee nor prove the suitability of this product for this specific application or the customer's intended use. The customer is responsible for testing and approving the product for its intended use.



The Royal League in ventilation, **control** and drive technology

## Intelligent control technology for any application

**ZIEHL-ABEGG system capabilities:**

**Everything from a single source – perfectly matched for optimal performance**

Please contact us. We would be pleased to design an individual solution for your requirements.

We would like to welcome you on our worldwide exhibitions. Please find our next exhibitions here.

[ZIEHL-ABEGG EVENTS](#)